

# OUR MAIN TOPICS FOR BETZDORF

## #BETZ4LIFE

- NEW LEISURE INFRASTRUCTURE: bike park, outdoor table tennis, bouldering/climbing wall, disc golf, parkour, feel-good oases.
- MORE EVENT BUSES
- A PSYCHOLOGIST/SOCIAL ASSISTANT in the school
- RESIDENCE STRUCTURES FOR OUR SENIORS in our community
- A COMMUNITY PEACE OFFICER FOR GREATER SAFETY

## #BETZ4SAVETHEPLANET

- INCREASED PROMOTION OF RENEWABLE ENERGY SOURCES

## #BETZ4YOURHOME

- OVER 20% AFFORDABLE HOUSING

## #BETZ4MOREMOBILITY

- NEW CYCLE PATHS
- CONNECTION TO THE "VEL'OH!"-NETWORK

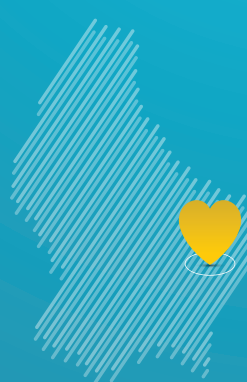
## #BETZ4ECONOMY

- ARTISANAL COMMERCIAL ZONE for small and medium-sized enterprises

## #BETZ4YOU

- SIMPLIFIED ADMINISTRATIVE PROCEDURES
- BUILDING PERMISSION DECISION no longer than 3 months

## COMPLETE PROGRAMM :



BETZDER



List 4

**MARC  
RIES**

**MÉI NO.  
MÉI BETZDER.**

# A STRONG TEAM FOR BETZDORF

## #BETZ4FUTURE

5 women, 6 men, lots of good ideas, lots of energy, lots of motivation!

Although we live in a community where we have a very good quality of life, the further development of our community is important. In order not to do this at the expense of the environment, our quality of life, our health or our children, we have to plan ahead with a concept that helps us to become a strong and modern municipality.

Our goal is to have an honest and constructive dialogue with the citizens and all stakeholders. In our election programme you will find everything that is important to us.

I am proud to be part of this dynamic and committed team. We are ready! So vote for the CSV, list 4, on 11 June.

Lynn Zovilé  
President CSV Betzdorf

LIST  
4



Lynn ZOVILÉ



Marc RIES



Alexandre  
APOLINARIO



Jean-Marc BALDATO



Claude BODEN



Aurore DULIEU



Diane JANIN



Liette  
KREMER-RIPPINGER



Guy KRIDEL



Sylvette  
SCHMIT-WEIGEL



Olafur  
SIGURDSSON